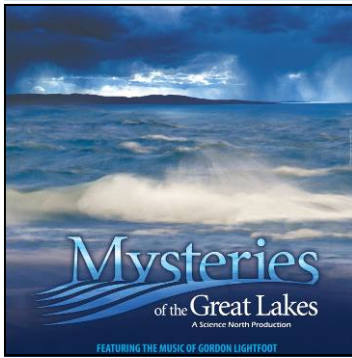




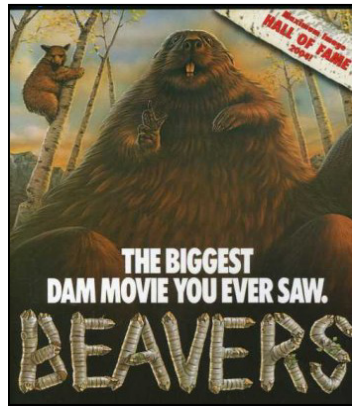
**GREAT BIG FILMS NOW SHOWING AT THE**



A Science North Production  
**SHOWCASING PRESQUE ISLE STATE PARK & ERIE, PENNSYLVANIA**

**SHOWTIMES: 11AM, 3PM**

Travel to the 'inland seas' where some of the most spectacular scenery on Earth is also the world's largest concentration of freshwater. The Great Lakes are home to varied wildlife, and 40 million Canadians and Americans rely on the Lakes for water. Discover how humanity has brought these Lakes to the brink of destruction...and back.

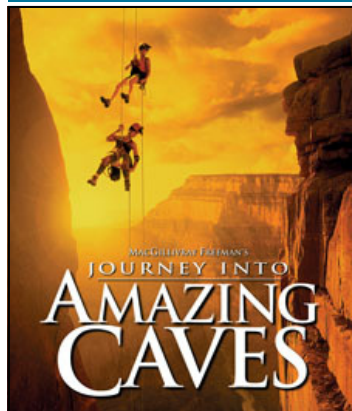


A Stephen Low Company Production

**SHOWTIMES: 12PM, 2PM, 4PM**

Beavers plunges into the habitat of one of nature's greatest engineers for an intimate look. Viewers are drawn into the story of a family of beavers as they grow, play and transform the world around them. Lyrical and humorous, Beavers captures as never before, the performance of these gifted builders and the majesty of their habitat.

**Sponsored By:**  
**The Friends of the Tom Ridge Environmental Center**



A MacGillivray Freeman Films Production

**SHOWTIMES: 1PM, 5PM**

Explore the mysterious world of the underground in *Journey Into Amazing Caves*. Follow two female cavers as they search for extreme living organisms in the ice caves of Greenland, the underwater caves of the Yucatan Peninsula and the earth caves of the Little Grand Canyon.

**Returning For A Limited Time**  
**January 2nd - February 26th**

**Showtimes on the hour.....11am - 5pm Wednesday through Sunday!**

*Closed on Monday and Tuesday January 9th - March 27th, 2012*

**(TIMES AND MOVIES SUBJECT TO CHANGE WITHOUT NOTICE)**

*Ask About Our Special Packages*

*Group Rates are available*

*Call Group Sales for Reservations at 814-833-6050*

**814-838-4123 \* 301 PENINSULA DRIVE, ERIE, PA 16505**